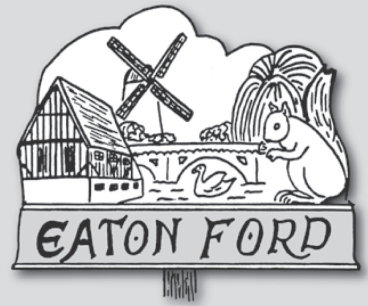




ESCAN

Your FREE Community Newsletter



Eatons Community Association - Registered Charity No.1110148

April 2011

Eatons May Day Celebrations

Monday May 2nd 2011

on Eaton Socon Green 12 noon – 4pm

12 noon stalls open

2pm Crowning of the May Queen

3pm Award of the Eatons Community Cup

4pm Drawing of the Raffle



If you wish to find out more about entertainment or stalls on May Day please contact ESCA (Eatons Community Association), 3 Collingwood Rd, Eaton Socon, St Neots, Cambs, PE19 8JQ, Tel 01480 216065 or email eatonsca@gmail.com

History Exhibition

St Marys Church, Eaton Socon

Saturday 30th April and Monday 2nd May 10am – 4pm

Local History Exhibition on the 1911 Census, the Eatons, Eynesbury, St Neots and local villages

Research local archives for families and buildings.

Explore the 1911 Census



Who lived in this lovely house in 1911

Open gardens and other dates

Lock Up/Cage Opening – Free admission
School Lane, Eaton Socon

May 15th 2pm – 4pm

Jun 19th 2pm – 4pm

Jul 10th 2pm – 4pm

Open Gardens 12th June 2011 – tickets and programmes from Eaton Socon Green

Neat Street July 2011 entries deadline – June 7th

St Georges Day Celebrations on Eynesbury Village Green - 23rd April – Eynesbury Village Assoc.



TRADITIONAL
SWEET SHOP

4 Cross Keys Mall, St. Neots

01480 356665

Pop in and see if we have your favourites amongst our 200+ jars

AMERICAN JELLY BELLY BEANS

Lots more news and views inside.

If you have any news or views please send to the Chairman no later than 20th July 2011 for inclusion in the next issue.

We look forward to hearing from you.



C & A Hurst Opticians

Registered Opticians
& Contact Lenses

359, Great North Road Eaton Socon

Telephone: 01480 406002



Useful Telephone Numbers

Street Lighting	0800 253 529
and report the number on the lamp-post, the street name and town.	
St Neots Town Council	01480 388911
Police	01480 456111
Gas Emergency	0800 111 999
Electricity Emergency	
24 Seven	0800 783 8838
EME	0800 056 8090
Water Emergencies	08457 145 145
Huntingdonshire District Council	
General Enquiries	01480 388388
Out of Hours Emergencies	01480 434167
Fly Tipping	01480 388640
Jubilee Hall	01480 394150
Duloe Village Hall	07768 303373
St Marys Church Hall Eaton Socon	01480 212219
Eatons Community Centre	01480 388911
Doctors Surgeries	
Eaton Socon Health Centre	08444 771802
Cedar House Surgery	01480 406677
Bushmead School	01480 375375
Crosshall Infants School	01480 475980
Crosshall Junior School	01480 475972



Useful Websites

ESCA	www.escan.org.uk
St Neots Town Council	www.stneots-tc.gov.uk
Eaton Socon Health Centre	www.eatonsoconhealthcentre.co.uk
Cedar House Surgery	www.cedarhousesurgery.net
Cambridgeshire Archives	www.ccan.co.uk
Paxton Pits	www.paxton-pits.org.uk
Sudbury Meadow	www.sudburymeadow.org.uk
St Marys Church	www.stmaryseatonsocon.org.uk
Everyclick	www.everyclick.com
Pightle	www.eatonsoconpightle.org.uk
Bushmead School	www.bushmeadprimaryschool.org.uk



Who's Who at ESCAN

Chairman	Sue Jarrett	01480 216065
Treasurer	Dave Jarrett	01480 216065
May Day Administrator	Margaret Birchall	01480 215695
Open Gardens	Collette Barnes	01480 403343
History Co-ordinator	Sue Jarrett	01480 216065
ESCAN Team	Oliver Reynolds	01480 216065

Copy date for the next edition of ESCAN for news, adverts and information – 20th July 2011.

Please send ESCAN letters & Adverts to ESCA, 3 Collingwood Rd, Eaton Socon, St Neots, PE19 8JQ Email – eatonsca@gmail.com

St Neots Sinfonia and St Neots Choral Society

Sat July 2nd at St Marys Church
Concert for Children including Peter and the Wolf, Horrortorio and Toy Symphony

Church BBQ on the Green

July 10th from 12.30pm on Eaton Socon Village Green
If it's wet, we'll do it all in the church!
All enquiries to the Church Office (01480) 352154.

Local Productions

VAMPS production

"Annie"

by Thomas Meehan, Charles Strouse, and Martin Charmin

at The Priory Centre, on 13 - 16 April at 7.30 pm nightly and 2.30 pm matinee on Saturday 16 April.

Tickets are available from the VAMPS Box Office, tel: 07866 224769 or online at www.thevamps.co.uk

St Neots Players

"Bouncers" (an adult comedy)

by John Godber at Buckden Millennium Centre
on 6 - 7 May at 7.30 pm
and The Priory Centre, St Neots
on 12 - 14 May at 7.30 pm

Book via the Players online Box Office at www.stneotsplayers.co.uk

Bottle Bank Money

Please remember to put your bottles in the Tesco Express Bottle bank in Eaton Socon and help us to give money out to local groups.

Bottles in the wheelie bin = money for HDC

Bottles in the Tesco Express Bottle Bank = money for local groups



"I'll grant you three wishes if you can get me out of here"

NEAT STREET

Neat Street July 2011

This popular event is now in its eighth year with Minden Court in Eaton Ford winning last years competition. It is now time to enter your street for this year's competition so get together with your neighbours and enter for Neat Street 2011. Streets will be judged on the absence of weeds on kerbs and gutters, no litter, (3) maintained front gardens or frontages and (4) unobstructed pavements. Contact ESCA by phone or email and enter your street by June 7th. Longer streets can be split into smaller sections.



Bushmead Primary School Hall Rental

We currently have our school halls available for hire some evenings and weekends for clubs and meetings. Unfortunately we are unable to accommodate parties.

For more information and prices, please contact the school office on 01480 375375

● Chairman's Spot ●

Welcome to another copy of ESCAN, your free community newsletter from the Eatons Community Association (ESCA).

2011 promises to be very eventful with royal weddings, a new bridge across our River Great Ouse and an ever expanding town across the railway line.

The church in Eaton Socon has a wide variety of events in Easter week which promise to suit everyone of all ages – why not join in with at least one event.

The following weekend the Community Association holds its annual Local History exhibition and traditional May Day Celebrations over the first May Bank Holiday so why not come along and enjoy yourselves. We also have the Village Lock Up in School Lane open on some Sundays in the summer, a walk around the Village in May, Open Gardens in June and the Church BBQ on Eaton Socon Village Green in July. Great village events for everyone to enjoy !

Hope to see you there,
Sue, ESCA Chairman

Currency Card

Travelling abroad is a fun and exciting experience, but getting currency can be laborious and expensive.

Not any more. There is a new way to buy and spend currency that means you won't go back to funny money, travellers cheques or just making do with your everyday card (and often getting badly stung by doing so).

Do you want to help ESCA at the same time?

Introducing - the new First Premier MasterCard prepaid travel card:

1. Buy your currency online 24/7 at your convenience
2. Receive your pre-loaded funds on a card, sent to your home address
3. Take your card away with you – it's a MasterCard card, so can be used in most places you can think of!
4. Use it to withdraw cash at ATMs, or to pay bills at shops, restaurants, excursions – the list is endless
5. The exchange rate is fixed at the time you buy the currency, so you don't need to worry about fluctuating rates
6. It's reloadable, so when the money runs out, simply log on and transfer over some more funds. Job done!
7. The FX broker will give ESCA a commission based on the total load of every card creating a much needed regular income.

The First Premier Travel card is the smarter way to carry travel money abroad.

Get yours now at www.escan.org.uk and we'll waive the card purchase fee (usually £6.95) on all orders over £200

ESCAN Deliveries

A very big thank you to two more people who have kindly phoned up and offered to deliver some ESCANs to nearby houses. We have a small team who count and bag the ESCANs and a larger team of over 60 people delivering the newsletters but there are still some areas not very well covered. If you have a little spare time and would like to help on the Queens Gardens estate, or elsewhere in the Eatons please let ESCA know. Your efforts are very much appreciated.

St Marys Church, Eaton Socon Easter Week

Date	Event	Venue
Palm Sunday (17th)	Morning services 9am and 10.30am	St Mary's Eaton Socon
	Shared Lunch 12.30pm, sign up nearer the time	St Mary's Eaton Socon
Monday (18th)	Ladies Meal at Millers Arms 7.30pm – £10 per person – tickets in advance	Millers Arms, Ackerman Street Eaton Socon
Tuesday (19th)	Walk to Duloe followed by a simple lunch at the village hall – the walk will take about an hour. Sign up in advance would be helpful	Meet at St Mary's Eaton Socon at 11am
	Wine tasting evening 7.30pm – tickets £7.50 in advance	St Mary's Eaton Socon
Wednesday (20th)	Easter Lunch – 12.30 classical concert followed by buffet lunch – £3 Tickets in advance	St Mary's Eaton Socon
	Under 18's Club Night 8-11pm – Free entry – no need to book – tuck shop available	St Mary's Eaton Socon
	Men's Meal at the Hong Kong 7 for 7.30pm Tickets £12.50 in advance	Hong Kong Restaurant, St Neots
Maundy Thursday (21st)	Special Friday Club Plus (Years 4-6) 10-12 – £1 per child no need to book	St Mary's Eaton Socon
	Coffee morning – bring cake and recipe swap 10.30-12	St Mary's Eaton Socon
	Maundy Thursday Service 4pm	St Mary's Eaton Socon
	Quiz night 8pm – Tickets in advance £2.50 - to include nibbles, Bring your own drink	St Mary's Eaton Socon
Good Friday (22nd)	Special Friday Club (Reception to Year 3) with Parents Café 10-12 – charge of £1 per child – no need to book – parents café free	Church and church hall
	Good Friday Service 2pm	St Mary's Eaton Socon
Easter Saturday (23rd)	Who Let the Dads Out – dads and under 5's – bacon sandwiches and tea or coffee 10-11.30, £2 per dad	St Mary's Eaton Socon
	Musical Evening 7.30 – pre-arranged musical items by members of congregation and friends – tickets £2.50 to include nibbles, bring own drink	St Mary's Eaton Socon
Easter Sunday (24th)	Morning services, 8am, 9am and 10.30am	St Mary's Eaton Socon

For all these events please contact <http://eatonsocon.org/light> or phone the Church Office 01480 352154

Date	Event	Venue
Good Friday	10.55 'Procession of Witness' - leaving Lidl's Car Park	St Neots
	11.15am Followed by a service in the Market Square	St Neots

The Pightle Millennium Green – Eaton Socon

Regular users of The Pightle cannot have failed to notice that some much needed conservation work has been undertaken during the winter months. Two voluntary groups have been hard at work with the Trustees helping to manage and maintain the Pightle for the enjoyment of community users. The trustees would also like to thank Jeff for removing the dead tree branches free of charge.

Alison Pearson, the Huntingdon Green Corridor Assistant, kindly put us in touch with a BCTV group; who aim to teach young people conservation and management skills. Susanne and her team have been coming in on a weekly basis to help with clearing some of the overgrown wooded areas, removing scrub which is encroaching onto the grassland areas and also cutting back some of the brambles in order to ensure walkers have clear access over the stile and round the paths. They have also planted some new hawthorns, which will hopefully become established creating a continual hedge line along the north side of The Pightle. BTCV will be coming in weekly until April 2011.

We have also had help from Community Payback Teams. Led mainly by Paul, the Community Payback team have cleared some of the undergrowth in the woods on the south side and created the dead hedging walkways with the waste material. This work has significantly opened up and made accessible pathways in an area which had become significantly overgrown.

I believe both groups have done a fantastic job. The majority of the people I have spoken to are pleased with the results. However, as in any instance where conservation work is undertaken, especially in areas which have been allowed to grow unchecked and unmanaged for a number of years. However, there have been a few complaints and some criticism that we are destroying the Pightle. Can I take this opportunity to state that vandalism or destruction of the Pightle is not what we are aiming to achieve. We are working towards maintaining the Pightle as agreed in the management plan that enabled the Pightle to be purchased originally.

These groups have opened areas to allow the light to penetrate and help to encourage new plant growth and have also revealed some of the daffodils and snowdrops that have not been seen for some time. Removing some of the overgrown or dead brambles, will help to encourage new growth, and also prevent the pathways becoming so overhung with brambles this summer. Some trees have been cut back to prevent those in the some areas dying off through overcrowding and will also encourage new and vigorous growth.

Either Derek Giles or I try to be in attendance when the voluntary groups come into work, so if you are walking round and have any questions about the work being undertaken please feel free to come and ask, or to volunteer your services.

One of the negative things for the groups working down the Pightle is having to be constantly alert for the significant amounts of dog mess

lying around. Can I remind dog owners to please pick up your dog mess; it is not very nice and also discourages parents from allowing children to play there.

Due to our lack of funding the trustees are seeking new funding streams, one of our ideas is to introduce 'Pal of the Pightle'; this will allow community members to make a small one off or continuous payment, which could help towards the insurance or grass cutting. We would greatly appreciate any support which could be offered, whether it is in money form or volunteer help.

Bev White - Chair

Tel: 01480 353054

St. Neots & District Gardening Club

St.Mary's Church Hall, Brook Street, St.Neots, 8pm.

- Apr 28th **Chrysanthemums My Way** by Mr. Jim Osbourne.
Comp. A Decorated Egg
- May 26th **Perennials** By Peter Jackson Comp. One Fuchsia Specimen
- May 29th **Trip to The Elms, Ramsey Forty-Foot** 2.30pm.
- Jun 23rd **Topical Presentations** A variety of speakers giving short presentations. *Comp. One Rose*
- Jun 26th **Trip to Normanby Hall** £22.00 Per. person
- July 28th The History and Uses of Herbs, by Margaret Waddy
Comp. 3 Veg 1 of each
- Aug 13th **Annual Flower Show**, Little Paxton Village Hall 2.00pm.
- Aug 25th **Trip to Mill House**, Bassingbourne

Contact – Chairman David Usher Tel 01480 476671

Pightle AGM

23rd May 2011 in St Marys Church, Eaton Socon
at 7.30pm

G & A Landscapes

Garden Services and Maintenance, Fencing,
Turfing, Patio's, Path's and much more
All plants, shrubs, and trees can be supplied
Insured, no job too small.

TEL: 01480 215963 or 07891 901 975.

FREE
Lawn
Health
Check

Amazingly green
lawns for
surprisingly little!

- Free Lawn Health Check an in-depth survey of your lawn
- Free Programme Proposal a unique solution for your lawn
- The finest feeds, fertilisers and weed control products available along with expert knowledge

For further information call
01480 812 393

or email info@prolawncares.co.uk

Actions required in Spring

- Feed lawn with Nitrogen slow release fertiliser
- Spray lawn with selective herbicide (only if warm enough)
- Mow lawn regularly and lightly. Don't cut shorter than ¾ inches (2 cm) this month. Grass will respond better if cut little and often.

Lawn Fact:

"lawn grass helps purify water which is entering underground aquifers. The root mass and soil microbes act as a filter to capture and break down many types of pollutants"

ProLawnCare

www.prolawncares.co.uk

Creating a Buzz!



'Cultivating Pride
in our Town'



'Bringing wildlife
closer to home'

Spring is on its way and the first queen Buff-tailed Bumblebees were searching for flowers during the milder days of late February. There weren't many about, which is one of the reasons **St Neots in Bloom** is promoting planting for bees, bumblebees, hoverflies and butterflies as part of its 2011 environmental campaign. **Friends of Sudbury Meadow** has already taken up the challenge and hopes to have its redesigned Butterfly garden, at Sudbury Meadow, fully planted by late March. The garden will also have a display of annual flowers incorporating St Neots in Bloom's 2011 colour theme of **yellow and blue**.

There are two key ways to help the insects above; trying not to use pesticides and providing a succession of flowers from which they are able to feed. It may take a bit of courage to do the former, but I have managed it for many years and have been rewarded with a huge increase in the number and variety of insects using our garden. The same is true at Sudbury Meadow, where pesticides are limited to a glyphosate-based weedkiller, which is used to clear the footpath and spot weed the occasional rogue, deep-rooted plant.

Most insects are not feeding during December and January. It is the odd balmy day in February which can tempt them out, then they need food as quickly as possible. The best types of flowers to grow are those with easy to access nectar and pollen sources. Dense, double flowers may look lovely but are generally



Comma butterfly on *Sedum* flowers

of little help to bees or butterflies as many are sterile or too dense for the insects to access. Early flowers include hellebores, crocus and the shrubby winter flowering honeysuckle, *Lonicera fragrantissima*. The choice widens out as the year goes on, so look for plants with single flowers and those with multiple, tiny flowers making up a large head. Herbs and importantly for us, many fruit and vegetables flowers, are loved by bees, bumblebees, butterflies and hoverflies. We simply can't afford to lose them!

Coming up in 2011 - St Neots in Blooms' Best Front Garden competition, with a £50 first prize, and the Commercial Frontage (baskets and containers) Awards. Both will be judged around the first week in July, but look out for more details in the coming months.

Alison Pearson

Chair, St Neots in Bloom and Friends of Sudbury Meadow.
01480 374792 or
email Alison.Pearson@dpconsultant.co.uk.

Carpet
Laminate
Karndean
Wood &
Vinyl

Floored by Ian

choose your flooring in the
comfort of your own home

- free measuring
- no obligation quote
- professional fitting

Over 20 Years Experience

Call Ian Today
07876 238308



Tiddlers & Toddlers

Do you know that there's a
children's Group running every
Friday morning?

Term-time at the
Jubilee Hall Eaton Socon

Everyone is welcome

We run from 9:30 – 11:30 am
Nominal charge £2.50 per family
(Includes drink & biscuit)

Come along and try
before you buy!

FIRST VISIT FREE!

Contact Diane on **0777 566 3849**
Jude on **01480 384132**
Or Margaret on **01480 215695**
Benny on **01480 477838**

Pal of the Pightle

The Pightle here in Eaton Socon is enjoyed by many and relies on volunteer help to keep it maintained for the enjoyment of us all. The Pightle is NOT a Council owned facility and therefore has to rely on volunteer help.

We need regular finance to pay for items like grass cutting, maintaining the paths, planting new bulbs and trees as well as the annual insurance that has to be paid.

Can you help by becoming a "Pal of The Pightle"?

A "one off" donation or a small regular monthly contribution would be of great benefit for the long term success of The Pightle.

Please send this off to Mrs Bev White (Chairman of The Pightle Trust) 69 Shakespeare Road Eaton Socon PE19 8HT

Dear Chairman Bev,

69 Shakespeare Road, Eaton Socon, St Neots, Cambs PE19 8HT

I would like to become a "Pal Of The Pightle"

- A) Please accept a donation of £_____ as a "one Off" donation to help maintain The Pightle.
- B) I would like to donate £_____ per month to help maintain The Pightle. (Please send me your bank details so I can set up a standing order)

I understand that The Pightle Trust is a registered Charity and is able to claim back a tax contribution from The Government. As a UK tax payer I would like to "Gift Aid" my contribution so that an additional 28% can be claimed.

Signed.....

Please send details of how I can help to:-

Name.....

Address.....

.....

Please make any cheques payable to 'The Pightle Millennium Green Trust'

I would like to be kept informed of any news about The Pightle by E Mail

My E Mail address is.....

RIP Soloprint

Did you know that the well known printers TSGCS (Soloprint), next to The White Horse, have closed ?

In April 1976 Soloprint moved into the former maltings and under the leadership of Bill Fairweather the printing works grew and later developed into TSGCS Creative Solutions with printing on paper and material etc. as well as developing websites. They were great supporters of local groups and of the Eatons Community Association. We would like to thank all the people who worked at Soloprint for their help in the past few years, printing our local newsletter, developing and supporting our website and printing our newest book – 'To The Glorious Memory'. We wish all the staff well in their future jobs.



Name that Bridge

Thank you for all your wonderful ideas for the name of the bridge. We passed them all to the committee who made the final decision and the new cycle and footbridge has now been named Willow Bridge, chosen by a student who attends St Neots Community College. Pathways throughout Eaton Socon are being widened to accommodate cyclists. Soon the bridge structure will appear and by September it is planned that the bridge will be in place to connect Eaton Socon and Eynesbury. In Eaton Socon the bridge will be sited near the cricket field, just off Shakespeare Rd and footpaths will connect with St Neots Community College, Eynesbury Manor Estate and to Tesco's.



Cycling Capes

Did you know that cycling capes were invented by Cecil Paget from Eaton Socon. Living in Ackerman Street Cecil and his wife were keen cyclists and the older villagers recall the couple cycling around on their tandem in their khaki shorts.

An old London bus was bought, kept on a cart track and used as a shop for oil-skins and bicycle accessories. Amazing what you can find out about your local area. Perhaps we should have Cecil and his cycling cape as one of the figures at the Portrait Bench.

Portrait bench by the bridge

This special bench is provided by the Sustrans Connect2 project and similar benches are being placed across the UK to form a common link for all Connect2 projects.

The Portrait bench is a collection of 3 life-sized local figures, cut from sheet steel and installed behind or in front of a simple wooden bench. Local residents are given the chance to choose three local people who can have their portrait by the bench. These people can be historical and for this area could possibly be the Eynesbury Giant, a miller from the River Mill, or another famous local person. If you have any ideas please let us know.



Portrait bench in Afan Valley, Wales

More information will soon be in the newspapers about these figures and at May Day it is also planned to have more information.

St. Neots Motor Company
 Look no Further for your quality used car
Tel: 01480 216374
 Email: sales@stneotsmotorcompany.co.uk
 (opposite The Highwayman)

—ADMIRAL—
HOMESPACE

- FLAT ROOFING
- CONSERVATORIES
- REPLACEMENT WINDOWS
- LOFT CONVERSIONS

Ermine Street • Alconbury
 Huntingdon
 Cambs • PE28 4EW
01480 456789
 admiralhomespace.com

Eaton Financial Services Ltd.
 For all your financial needs:

Mortgages
 Equity Release
 Life & Health Protection

Pensions
 Investments
 Retirement Planning

EFS Ltd

Call: 01480 215788
Email: EFSLtd1@gmail.com

Typical fee for equity release 1.75%. To understand the features and risks please ask for a personal quotation. Your home may be repossessed if you do not keep up repayments on your mortgage.

Eaton Financial Services Ltd is Authorised and Regulated by the Financial Services Authority, FSA Number 455121

WASHING MACHINES
DRYERS
COOKERS
DISHWASHERS
LOCAL ESTABLISHED BUSINESS
Tel: 01480 212426

Nails by Claire Pateman
 specialist in:

- Fiberglass & silk nail extensions
- silk wraps manicures & pedicures

Home based, or mobile service offered St. Neots area.
 To book call: 07879446463

I&D Do It All
2 Honest, Reliable Ladies who work to help YOU!

Cleaning Services
 House Calls \ Minding
 Hospital \ GP Visits
 Ironing, Shopping
 Internal Window Cleaning
 Dog Walking
 Spring Cleaning

No Job Too Small

Key Holders, Insured, CRB Checked
 with References Available on request.
01480 211 701
 0782 5179110 or 07837 336874

Finally, a guaranteed solution for your flat roof problems, proven to last over 40 years!

Does your roof suffer from any of these signs?
 Moss growth • Cracks or bumps • Leaks • Expired guarantee • Or is it more than 5 years old?

Stop! Replace it now, replace it permanently and prevent misery from a leaking roof.

Before
 After

Unlike felt, RubberBond EPDM will not split, leak or crack and it's tough enough to walk on. Installed in full compliance with the revised Building Regulations of April 2006!

RUBBERBOND
 EPDM
 APPROVED INSTALLER

THE RUBBER ROOFING COMPANY

Call NOW for your FREE, no obligation quotation - valid for 12 months.
01480 369009
 Lines open 24 hours a day, 7 days a week
 the rubberroofingcompany.com

History Dates

Roxton & District Local History Group

Monthly meetings at Roxton Parish Hall at 7.30pm

- May 5th **The Golden Age of the Ouse** (Bedford to St Ives) by Bridgette Flannagan
- May 26th **Evening Visit to Peacocks Fine Art Sale Rooms, Bedford;** inc. Buffet & Quiz. Few places open to non – members, tickets £12.00 p/p. Early enquiry essential.
- Jun 2nd **The History of the Harpur Trust to the present day.** (Illustrated) by Suzanne Sharpe & Richard Wildman.
- Jul 7th **Visit to Deene Park Northants;** members only
- Sep 1st **Members of SNADAC** (St.Neots and District Artifacts Club) Uncovering the Past – local finds and demonstration of metal detecting

Contact either **John Rogerson Tel 01234 871150** or **Stella Gibbs 01480 351931**

St Neots Local History Society

Monthly meetings at Eynesbury C of E School Hall, Montagu Street, Eynesbury at 7.30pm

- May 6th **'Aviation Archaeology in Cambridgeshire'** by Julian Evenhart
- Jun 3rd **'St Neots & the Great War'** by Ken Woods
- Jul 1st **Trip to Moggerhanger Park** – guided tour of house and park
- Aug 5th **Trip to Houghton Mill** – guided tour
- Sep 2nd **'The Sherriff of Huntingdonshire'** by Elizabeth Stazicker

Chairperson – Elaine Donaldson 01480 217492

Colmworth & Neighbours History Society

Monthly meetings at Colmworth Village Hall at 7.30pm

- May 18th **'Colmworth Medieval Documents'** by Martin Deacon and Kevin Ward
- Jun 17th **'RAF Tempsford: Bedfordshires Most Secret Airfield'** by Bernard O'Connor
- Jul 15th **'Horace Clarabut, an Edwardian Photographer in St Neots'** by Rodney Todman

Chairperson – Stephen Smith 01234 376487

MATTHEW PARIS EXHIBITION

at St Denys Church, Colmworth from 2nd -16th July 2011.
Friday 1st July – Lecture at 7.30pm.

Matthew Paris (c. 1200 – 1259) was a Benedictine monk, English chronicler, artist in illuminated manuscripts and cartographer, based at St Albans Abbey in Hertfordshire. He wrote a number of works, mostly historical, which he scribed and illuminated himself, typically in drawings partly coloured with watercolour washes, sometimes called "tinted drawings". This should be a very interesting exhibition depicting life in the 13th century.

UNDER NEW OWNERSHIP - THE WHITE HORSE, EATON SOCON



the
**WHITE
HORSE**

CLASSIC CARVERIES
EATON SOCON

ALL WEEK CARVERY
NEW WINE LIST
FRESH GROUND COFFEE
AND MUCH MORE

ALL AT THE WHITE HORSE

POP IN AND SEE THE NEW
CARVERY RESTAURANT

TELEPHONE: 01480 470853

Open Gardens 12th June 2011

Last year's Eatons Open Gardens was a great success and we raised money for children's groups within the Eatons. We are still looking for more gardens to make this event bigger and this year the date has been set for the afternoon of Sunday 12th June. If you would like to open your garden in aid of charity please let ESCA know at 3 Collingwood Road, Eaton Socon, Cambs or email eatonsca@gmail.com. Tickets and programmes will be available nearer the time. Watch out in the local newspapers and noticeboards for exact times nearer the event.

Bag a bargain at Wear it, Love it, Share it!

A festival of fashion bargains comes to Winhills School, St Neots from 12pm on Saturday 7 May.

The Wear It, Love It, Share It campaign gives you the chance to pick up second hand fashion bargains, enjoy fashion shows, and be pampered with a range of treatments. You can even learn some easy ways to spruce up your wardrobe just in time for the summer. Your kids can also enjoy the day with fun workshops, a treasure hunt and face painting.

Free entry and there are also great prizes for coming along, and more if you bring your unwanted clothes with you to donate. If you love clothes, wear them then share them!

To check details go to www.recap.co.uk/wearit



St Neots Saturday and Sunday Riders Group

Local Volunteer Rangers from Sustrans organise cycle rides around our countryside monthly on Sunday mornings, usually on the 3rd Sunday of the month. Participation is free and fund raising is optional. Riders of all ages are welcome, though children must be accompanied by adults. The pace is easy so no one is left behind. If you are not ready for a long bike ride then join the Rangers for a shorter ride, approx 1 hour – on the 1st Saturday of the month.

Normal 10:30 prompt start from outside the Ambiance Café in the Riverside Park.

For more information contact **Richard Cooper, Volunteer Liaison Ranger**
email ranger@ridingabike.co.uk or
www.tinyurl.com/bikeridedates, Tel 01480 889171

BLACK CAT COMPUTERS

Fast & Reliable PC Repair

- 🔧 Computer Repairs
- 🔧 Computer Upgrades
- 🔧 Networking
- 🔧 Data Recovery
- 🔧 Website Design
- 🔧 Supply a New PC
- 🔧 Printer and Scanner Setup
- 🔧 Setting up Email Accounts
- 🔧 Securely Erasing Data



Phone Clive Thomas on:
Tel: 01480 212956
Mob: 07920115994
www.black-cat-computers.co.uk

Best Foot Forward

Mobile Foot Health Care Practitioners

We offer **First Class** foot care and provide treatments in the comfort of your own home.

- Thick Toe Nails • Fungal Infections
- Corns • Hard Skin Removal • Callus
- Verruca • Ingrowing Toe Nails
- General Nail & Foot Care



Call Helen now for an appointment on
07814 741 704

Helen Morris SAC Dip. FHPP FHPT
Andrina Baldock SAC Dip. FHPP FHPT
Jessica Dentice Dip. FHP

Local history Books and Information

Why not buy one of the ESCA local history books. The larger books will provide you with hours of reading and re-reading as you learn about the history of the houses and the families who lived in the Eatons.

All these booklets are available for reference in the St Neots and Huntingdon Reference Libraries and the County Archives offices in Bedford and Huntingdon. They are also available to buy at St Neots Museum. The ESCA books are written by ESCA for anyone with an interest in the Eatons. All profits are used to support ESCA projects within the Eatons and no profits go to Committee members. If you wish to buy these books they can be obtained from "ESCA", 3 Collingwood Road, Eaton Socon, St Neots, Hunts, PE19 8JQ using the form below.

<input type="checkbox"/> Eaton Socon at Work	£2.50
<input type="checkbox"/> Eaton Socon in Character	£2.50
<input type="checkbox"/> The Eatons at War	£2.50
<input type="checkbox"/> The Inns and Outs of the Eatons	£3.00
<input type="checkbox"/> The River in the Eatons	£3.00
<input type="checkbox"/> Trails Around the Eatons	£3.00
<input type="checkbox"/> A Year in the Life of the Eatons (1992)	£2.50
<input type="checkbox"/> Church and Churchyard Survey	£7.50
<input type="checkbox"/> Eaton Socon Burials Registers 1813 - 2002	£6.00
<input type="checkbox"/> Eaton Socon Cemetery 1930 - 2002	£7.50
<input type="checkbox"/> Recalling 75 Years On (Church Fire of 1930)	£3.00
<input type="checkbox"/> School Admission Register 1910-1969	£3.50
<input type="checkbox"/> Eaton Socon School Punishment Book	£1.50
<input type="checkbox"/> The Ways and Wherefores of the Eatons	£3.00
<input type="checkbox"/> Little End Hamlet	£3.50
<input type="checkbox"/> Cross Hall Ford Hamlet - The Osborne Empire	£4.00
<input type="checkbox"/> Maltmans Gardens - (Health Centre Area)	£7.50
<input type="checkbox"/> Eaton Ford - The Millers and the Masons	£7.50
<input type="checkbox"/> Cross Hall - The Lost Hamlet of Eaton Ford	£6.00
<input type="checkbox"/> Eaton Socon - The Village Lanes	£8.00
<input type="checkbox"/> Great North Road - Part 1 (Texaco Garage to Nelson Road)	£7.50
<input type="checkbox"/> Great North Road - Part 2 (Nelson Road to Andersons Butchers)	£7.50
<input type="checkbox"/> Great North Road - Part 3 (Wagon & Horses to Bushmead Road)	£7.50
<input type="checkbox"/> Great North Road - Part 4 (Bushmead Road to George & Dragon)	£7.50
<input type="checkbox"/> To the Glorious Memory – Eaton Socon War Memorial	£9.95
<input type="checkbox"/> Eaton Socon - Limited Edition Glass	£8.99
<input type="checkbox"/> Eaton Ford - Limited Edition Glass	£8.99

I enclose a cheque for _____ made payable to ESCA.

Name _____

Address _____

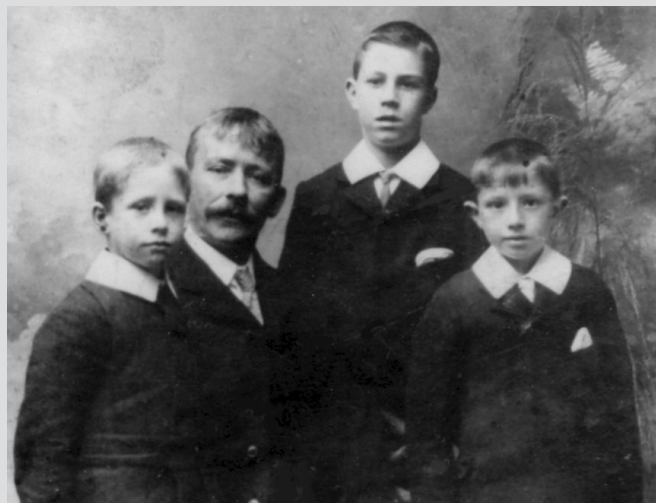
Eaton Socon Censuses and Electoral Registers are available on request
(Postage and Packing free to Eatons and St Neots residents)



Sit in the summer sun with a glass of your favourite tippie in our unique limited edition 9 oz glasses. Available from ESCA and St Neots Museum.

Eatons Local History Exhibition – The 1911 Census

At St Marys Church, Eaton Socon from 10am-4pm April 30th and May 2nd



When you fill in your census form this year why not think about life 100 years ago when the people first had to fill in their own census forms. All the earlier census forms had been filled in by a census enumerator who visited each house and wrote down the details of who stayed in that particular property on census night. In 1901 the details included the property address, name of the person, the relationship to the head of the household, whether single married or widowed, age, occupation, whether an employer or a worker, birthplace and any physical disability. For the first time in 1911 the family had to fill in the details themselves and more questions were asked such as – how many years had a married couple been married, how many children had been born and how many were still living. This gives a much clearer idea of the size of families and is very helpful when researching families and family life.

This years local history exhibition will focus on the 1911 census in the Eatons, St Neots and Eynesbury, so if you are a local person why not come along and see if you can find your family in the 1911 census. We have spent many hours adding the 1911 census into all our house files so if you are local or new to the area why not come along and find out who lived where locally. The 1911 census will be available for research for the Eatons, Eynesbury, St Neots and several local villages such as Duloe, Staploe, Wyboston, Buckden, Little Barford, Little Staughton and Bolnhurst. We are also planning to have internet access and if you have an idea where your relative is in the country we may be able to find their 1911 Census entry.

This photo shows Henry Oakley with his sons Percy (left), Tom (middle) and Frank (right). Henry filled in the 1911 Census form with details of his wife and these three sons and signed the form. Two years later he died and during WW1 his son Frank died. His widow Alice married twice more and was well known as Ma Corbett who ran the George and Dragon for many years.

St Neots Local History Month - May

Talks and walks are being planned so contact the St Neots Museum and St Neots Library for more information for events during May. Do not forget the Eatons Community Association's local exhibition in Eaton Socon Church on April 30th and 2nd May when there will be an exhibition on the 1911 Census, local archives for research and local history books for sale.